

>> 10TH ANNIVERSARY FORECASTLE FESTIVAL LAUNCHES FRIDAY

Christmas in July

BY BRADEN LAMMERS

Braden.Lammers@newsandtribune.com

LOUISVILLE — The summer concert season is well under way, and the granddaddy of shows based in Louisville is set to kick-off Friday.

While it is not the oldest of festivals around the region, it certainly has become the premiere event in the area.

Counted as one of the top outdoor festivals in the country by "Rolling Stone Magazine," "Paste Magazine" and "SPIN Magazine" the 10th version of Forecastle is set to hit Louisville's Waterfront after taking a year hiatus.

Since hosting the first show in 2002 in Louisville's Tyler Park, where the free outdoor festival drew "several hundred people" and cost less than \$500 to produce, the last incarnation of the festival — in 2010 — hosted more than 100 bands and attracted 30,000 attendees from across the country, according to the festival's website.

The festival was revamped for its 10th anniversary show as it partnered with AC Entertainment of Bonnaroo fame, and enlisted hometown favorites My Morning Jacket to help develop the three-day festival.

Along with My Morning Jacket headlining Saturday's shows, Friday night will feature Bassnectar and Wilco will close the festival as the Sunday headliner.

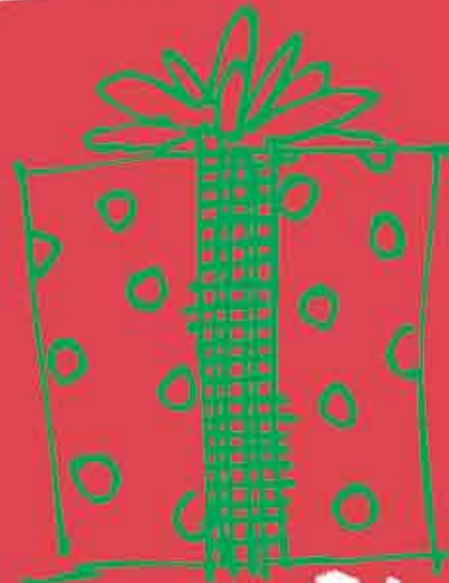
The final lineup features more than 70 bands on five stages, according to a Forecastle Festival press release. Among other bands featured during the three-day event are Girl Talk, Andrew Bird, Sleigh Bells, Neko Case, Beach House, The Head and the Heart and Dr. Dog.

When the initial lineup was announced in February My Morning Jacket frontman Jim James said, "be on the lookout for further announcements and some special surprises. It's gonna be a sweet time ... Christmas in July!"

Special features of the show that have been announced since include a number of after-parties, including shows hosted on the Belle of Louisville.

But again at the center of the Forecastle Festival is a number of art installations and environmental and sustainability activities.

The Forecastle Foundation — a nonprofit organization — is designed to educate, protect and raise environmental awareness and serves as the activism pillar of the Forecastle Festival, according to the website.



SO YOU KNOW

• Friday: music will begin at 5:30 p.m. Headliner Bassnectar is set to play at 10:45 p.m. on the "Mast Stage."

• Saturday: music will begin at 3 p.m. Headliner My Morning Jacket is set to play at 9:30 p.m. on the "Mast Stage."

• Sunday: music will begin at 3 p.m. Headliner Wilco is set to play at 9:30 p.m. on the "Mast Stage."

— For more information and a full list of bands and show times visit forecastlefest.com.



PHOTOS BY
C. MICHAEL STEWART